

The logo for Santint, featuring the word "SANTINT" in white, bold, uppercase letters with a stylized orange and white "S" on a teal square background.

A2 Automatic Dispenser User Manual



1	Start Software
2	Log-in Software
3	Interface
4	Formula
5	Dispensing

1. Start Software

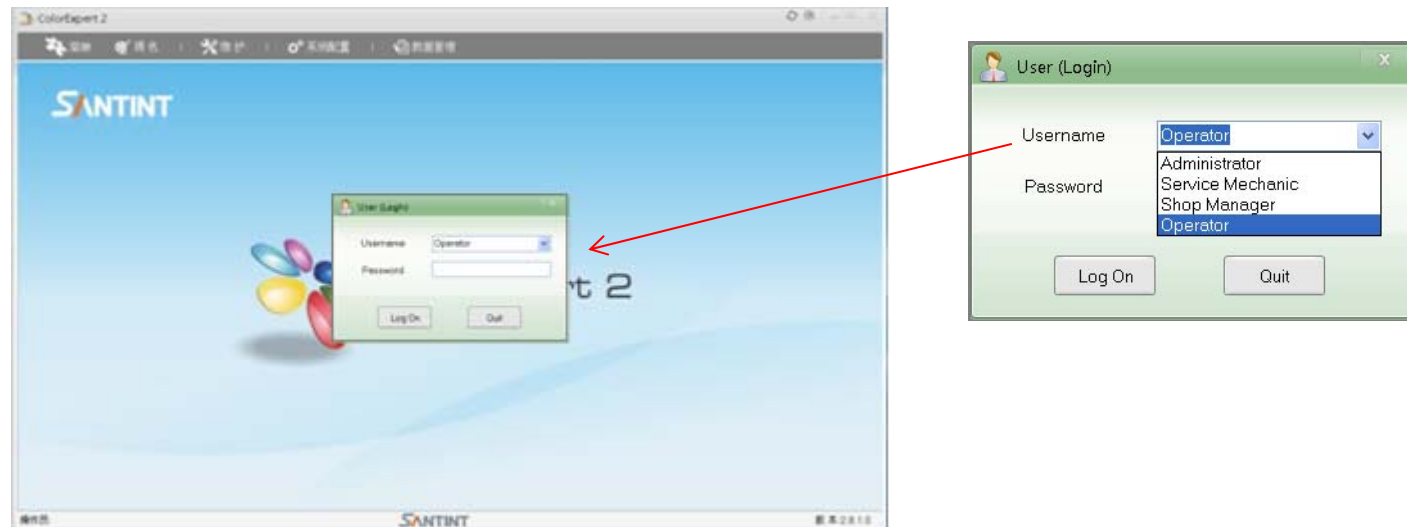
Click the icon of  to start the software. Choose COM3, Click "OK".

Notice: "PortState" would be seen only once.



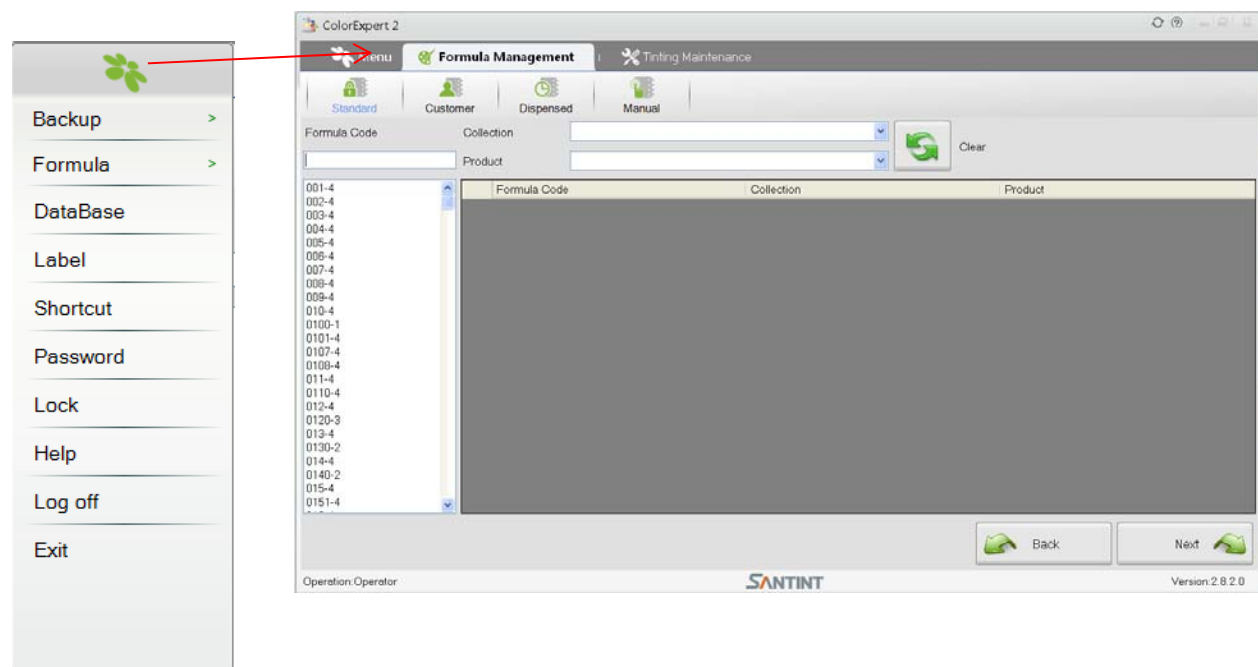
2. Log-in Software

Operator may choose a username and enter the password to log in. The setting is for safety.



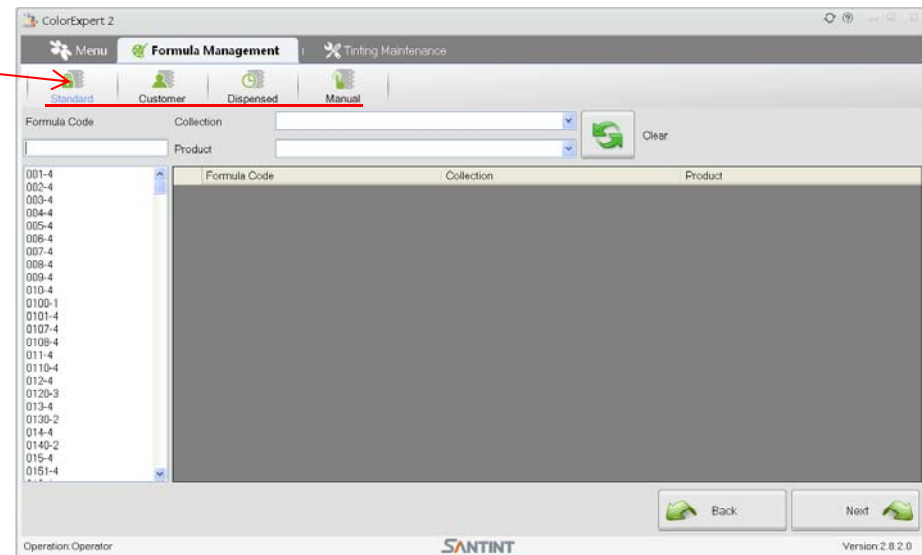
3. Interface

The access rights vary for different user. Take Operator as an example:



4. Formula

The system provides Standard Formula; Customer Formula and History Formula. User may choose the required formula.



Standard Formula: it is from the paint factory. The details of series; product; color code; base paint; and prefill can are available.

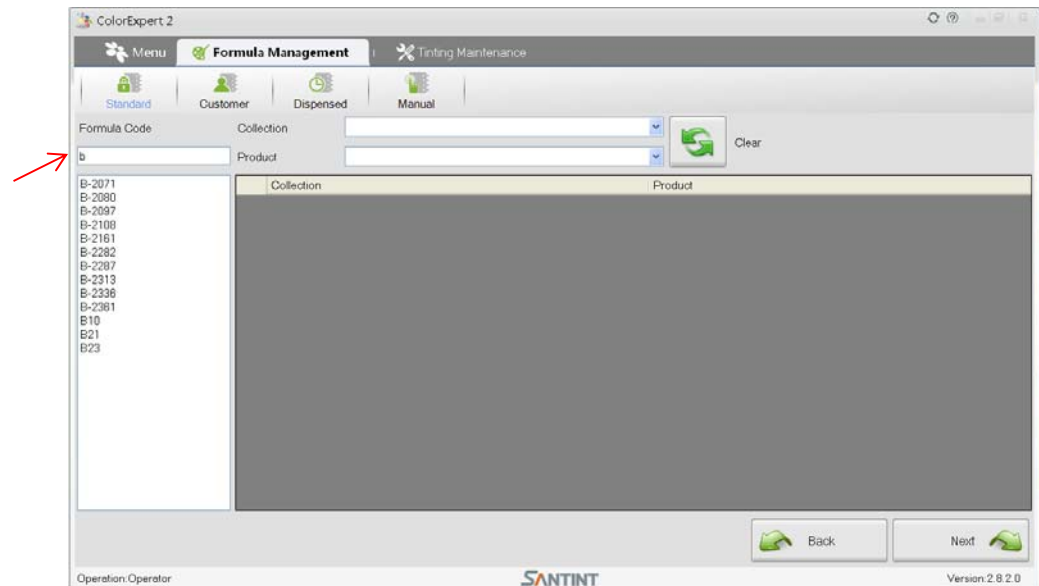
Customer Formula: it is the customized formula created by the operator for each customer. You may set the customer names as the formula series for classification and convenience.

History Formula: it is the dispensing records. You may search any history formula by dispensing date/hour/minute.

5. Dispensing

Step 1: Choose formula code.

Type in the initial letter or first figure of a formula, the relevant formulas would be shown for the user's convenience.



Step 2: choose the series and product and click "Next" .

The screenshot shows the 'ColorExpert 2' software interface. The 'Formula Management' tab is active. The 'Collection' dropdown menu is set to 'SINPOL EXTRA' and the 'Product' dropdown menu is set to 'SINPOL PRIMA'. A list of formula codes is displayed on the left, and a list of products is displayed on the right. The 'Next' button is highlighted with a green arrow, and a red arrow points from the 'SINPOL PRIMA' product selection to the 'Next' button.

Product
TERMO-LINE ton karta
TERMO-LINE ton karta
TERMO-LINE ton karta
TERMO-LINE ton karta
TERMO-LINE ton karta
TERMO-LINE ton karta
TERMO-LINE ton karta
NCS
JUB 2009

Step 3: choose formula series and formula product, place the base paint can.



Step 4: choose "Can Size" and check the formula details. Click "Dispensing".

ColorExpert 2

Menu | Formula Management | Tinting Maintenance

Standard | Customer | Dispensed | Manual | Print | Price | Save | Edit

Component Information			
Code	Name	Amount (ML)	Color
DY36	DY36	1.69	
CX3	CX3	2.934	
CY1	CY1	12.708	

Can Information

Can size: 1 KG

8 kg
25 kg

Number of cans: 1

7 8 9
4 5 6
1 2 3
C 0 <-

Dispense

Formula Information

Formula Code	X131
Collection	SINPOL PRIMA
Product	KOMOCEM
Creation Date	2014-7-14 13:07
Comment	

Base

Sinpol prima

1 KG

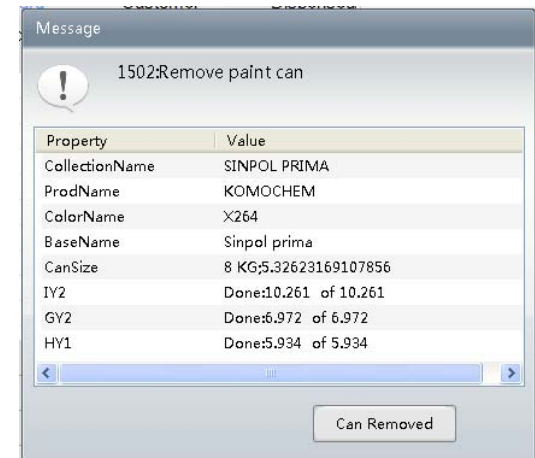
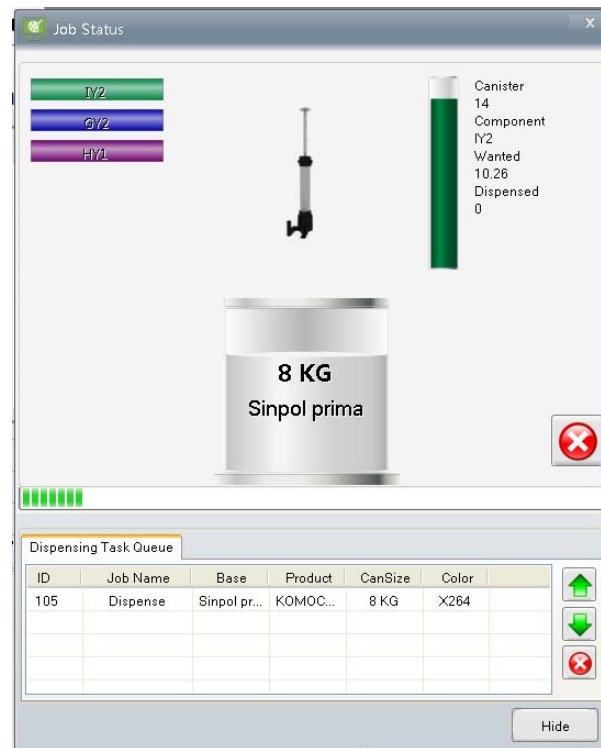
Back

Operation: Operator

SANTINT

Version: 2.8.2.0

Step 5: Job status → the system will remind you to remove the base paint can after dispensing .





Contact us for other issue : 0371 67857219 / Email:service@santint.com

SANTINT · 中国

地址：郑州 中原西路 须水工贸园区
电话：+86 371 6785 7168

SANTINT · 欧洲

地址：ul. Postepu 19, mag.5
02-676 Warszawa Polska
电话：+48 22 847 64 90

SANTINT · 美国

地址：2580 Corporate Place Suite
F102 Monterey Park CA 91754 USA
电话：1 855 SANTINT

SANTINT · 澳洲

地址：2/4 Weddle Court Laverton
North Victoria
电话：+61 (3) 8348 5408