

# AO<sub>200</sub>

Automatic Dispenser  
Piston Pump  
Simultaneous Dispensing



- ➔ Net efficiency: 200ml/min×5
- ➔ Minimum shot: 1/384Y(0.077ml)

● Manual Can Table Version

**SANTINT · CHINA**

Address: Xushui Industrial Trade Park, Zhengzhou.  
Tel: +86 371 6785 7168

**SANTINT · POLAND**

Address: ul. Postepu 19. mag.5  
02-676 Warszawa Polska  
Email: info@santint.com

**SANTINT · U.S.A**

Address: 2000 Bloomingdale Road, Suite 220, Glendale Heights, IL 60139  
Tel: +1 847 350 6911

**SANTINT · AUSTRALIA**

Address: 2/4 Weddel Court  
Laverton North Victoria  
Email: info@santint.com

# AO<sub>200</sub> Automatic Dispenser FEATURES >>>

**SANTINT**  
WHERE INNOVATION MEETS PRECISION



● Electrical Can Table Version

1

## Piston Pump Simultaneous

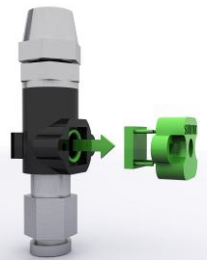
Simultaneous dispensing of 5 canisters. Calibration-free and easy maintenance.



2

## Adjustable Tube Pressure Sensor

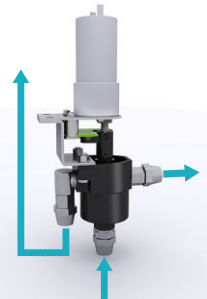
No tube explosion, longer durability; Alarm when nozzles blocked.



3

## Recirculation

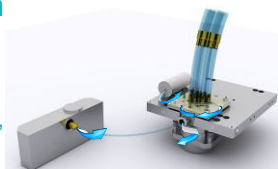
No sedimentation, drying or block in tubes, minimizing malfunction.



4

## Water Circulation Humidifier

Minimizing nozzle blockage; rotary nozzle, easy to clean.



- Dispensing Type: Simultaneous
- Minimum Shot: 1/384Y(0.077ml)
- Net Efficiency: 200ml/minX5

- No. of Canisters: Up to 32
- Canister Size: 2.5L/4.5L
- Canister Material: POM

■ Flow Rate (Single Pump): 500 ml/min

■ Efficiency (Single Pump): 200ml/min

■ Dimension: 880X775X1185 (16 cans)  
(WDXH) 1260X775X1185 (24 cans)  
(mm) 1690X865X1305 (32 cans)

- Power: 250W
- Power Supply: 220V/110V,50Hz/60Hz

**AO<sub>200</sub>**  
Technical  
Parameters