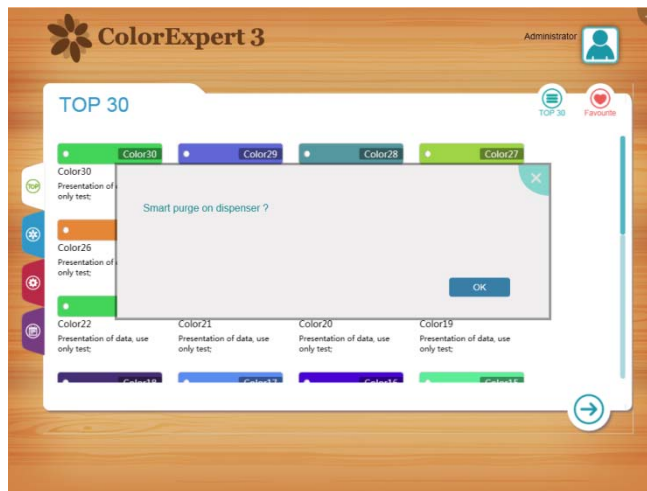




## **AO Simultaneous Dispenser Maintenance Guidance**



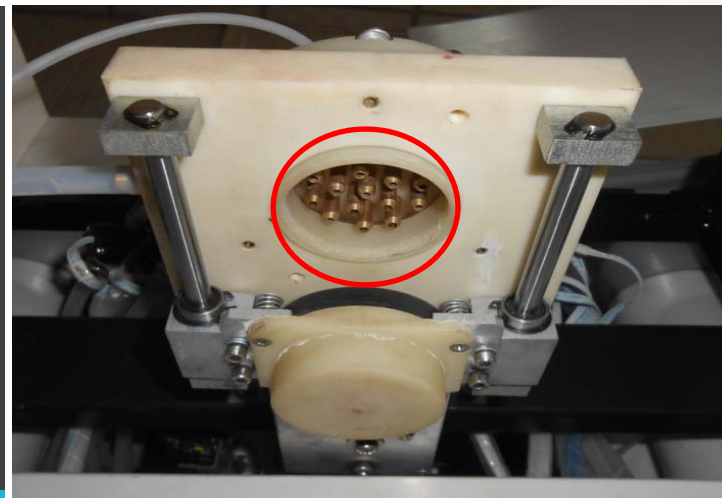
1	Daily Maintenance
2	Weekly Maintenance
3	Maintenance in Every 6 Months
4	Troubleshooting
5	Error Code ( Introduction )



Notes: the software will remind you for smart purge.

1. Keep the machine powered on to ensure stirring and avoid sedimentation.
2. If "Smart Purge" reminder appears, place a paint can under the nozzle and click "Yes" .

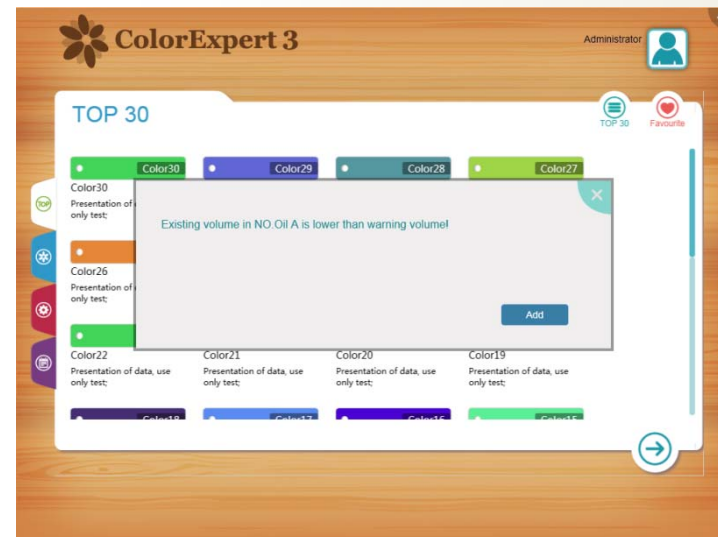
1. Check the integrated nozzle on weekly basis to see if there is any colorant dryness or residue. If yes, clean it.

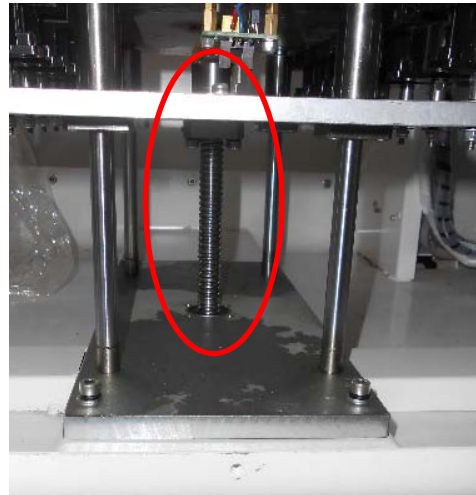


2. Check the water container on weekly basis to ensure enough water for circulation pump, thus to keep the humidity for the integrated nozzle.



2. Check the remaining colorant volume inside the canister on weekly basis. If the volume is lower than warning level (0.9L), the software will remind you to refill. If it is lower than minimum level (0.3L), the dispensing would not be available till refill to top.





1. Lubricate the ball screw in every 6 months.

Issue	Cause	Solution
<b>Intermittent dispensing</b>	1 Air bubble inside cylinder. 2 Insufficient colorant inside the canister. 3 Colorant dryness/blockage.	Recirculation to exhaust air. Fill colorants.  Stirring.
<b>E02xxchannel</b>	1 Nozzle is blocked.	Clean the nozzle.
<b>Software malfunction</b>	1 Power supply is off or emergency stop button is pressed. 2 USB or serial port line is loose.	Turn on the power supply or release the emergency stop button. Connect the wire/line properly.
<b>Mistint</b>	1 Wrong formula/base paint. 2 Other base paint brand used. 3 Nozzle blocked. 4 Insufficient colorant inside the canister.	Confirm the formula/base paint. Do not use other brand. Clean the nozzle. Fill colorants.



Error Code	Issue	Cause	Solution
E02-XX	Nozzle blocked.	Nozzle is blocked.	Clean it.
E11	Emergency stop button is not released	Emergency stop button is not released. Broken emergency stop button or wire.	Release it. Replace it or reconnect it.
E18	Base paint can in trouble.	Base paint can is removed during dispensing. Base paint can sensor is broken.	Place it back. Replace it.
E31-XX ( XX = Valve number )	Valve in trouble.	Valve motor/sensor wire is loose. Valve sensor is broken. Mainboard is broken.	Reconnect it. Replace it. Replace it.
E32-XX ( XX = Drive pump number )	Step motor in trouble.	Step motor is broken. Step motor drive is broken. Abnormal voltage. Connective wire is loose. Pump sensor is broken.	Replace it. Replace it. Check the power supply voltage. Reconnect it. Replace it.
E43	Humidifier in trouble.	Humidifier motor/sensor wire is loose. Humidifier mechanical part is broken. Humidifier motor is broken. Humidifier sensor is broken.	Reconnect it. Replace it. Replace it. Replace it.
E51	Communication in trouble.	Wire between mainboard and controller is loose.	Reconnect it.
	Stirring motor doesn' t work.	Fuse is broken. Wire is off. Motor is broken. Electric relay is broken.	Replace it. Reconnect it. Replace it. Replace it.



Contact us for other issue : 0371 67857219 / Email:service@santint.com

### **SANTINT · 中国**

地址：郑州 中原西路 须水工贸园区  
电话：+86 371 6785 7168

### **SANTINT · 欧洲**

地址：ul. Postepu 19. mag.5  
02-676 Warszawa Polska  
电话：+48 22 847 64 90

### **SANTINT · 美国**

地址：2580 Corporate Place Suite  
F102 Monterey Park CA 91754 USA  
电话：1 855 SANTINT

### **SANTINT · 澳洲**

地址：2/4 Weddle Court Laverton  
North Victoria  
电话：+61 (3) 8348 5408